

### 3.5 Linearity and range

A series of standard samples at different concentrations of the target compounds were prepared to evaluate the linearity. After analyzing each preparation in duplicate, a linear regression analysis was performed on the average peak areas versus the concentration of the levels studied (Fig. 3.7, 3.8, 3.9).

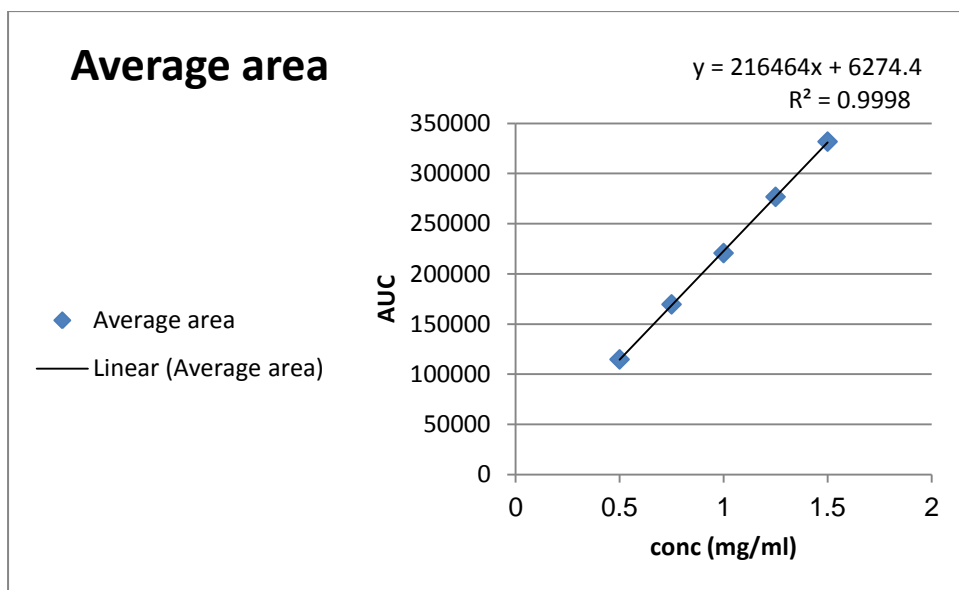


Figure 3.7. Calibration curve of glimepiride

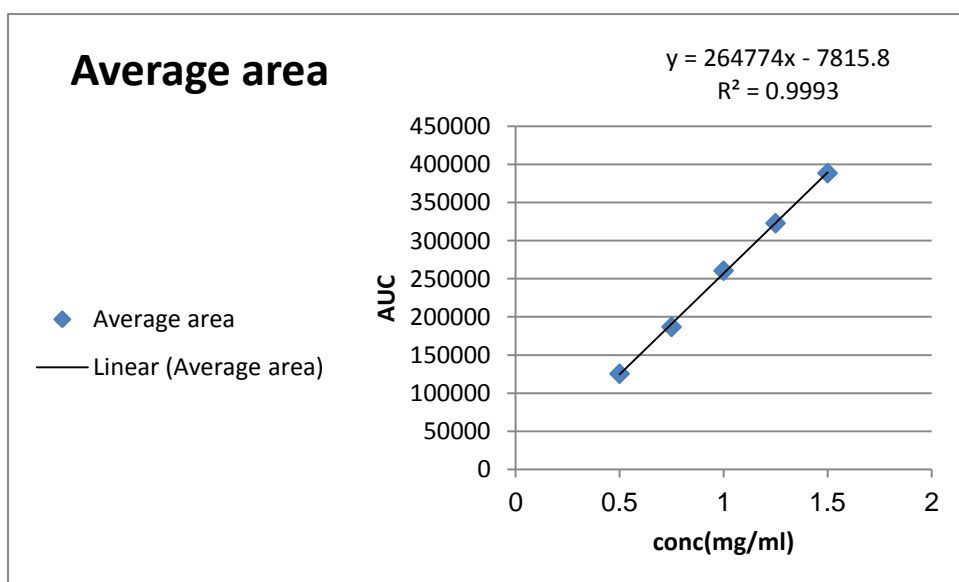


Figure 3.8. Calibration curve of amlodipine